

# **PUBLIC INFORMATION OPEN HOUSE**

**March 22, 2022  
5:30 - 7 PM**



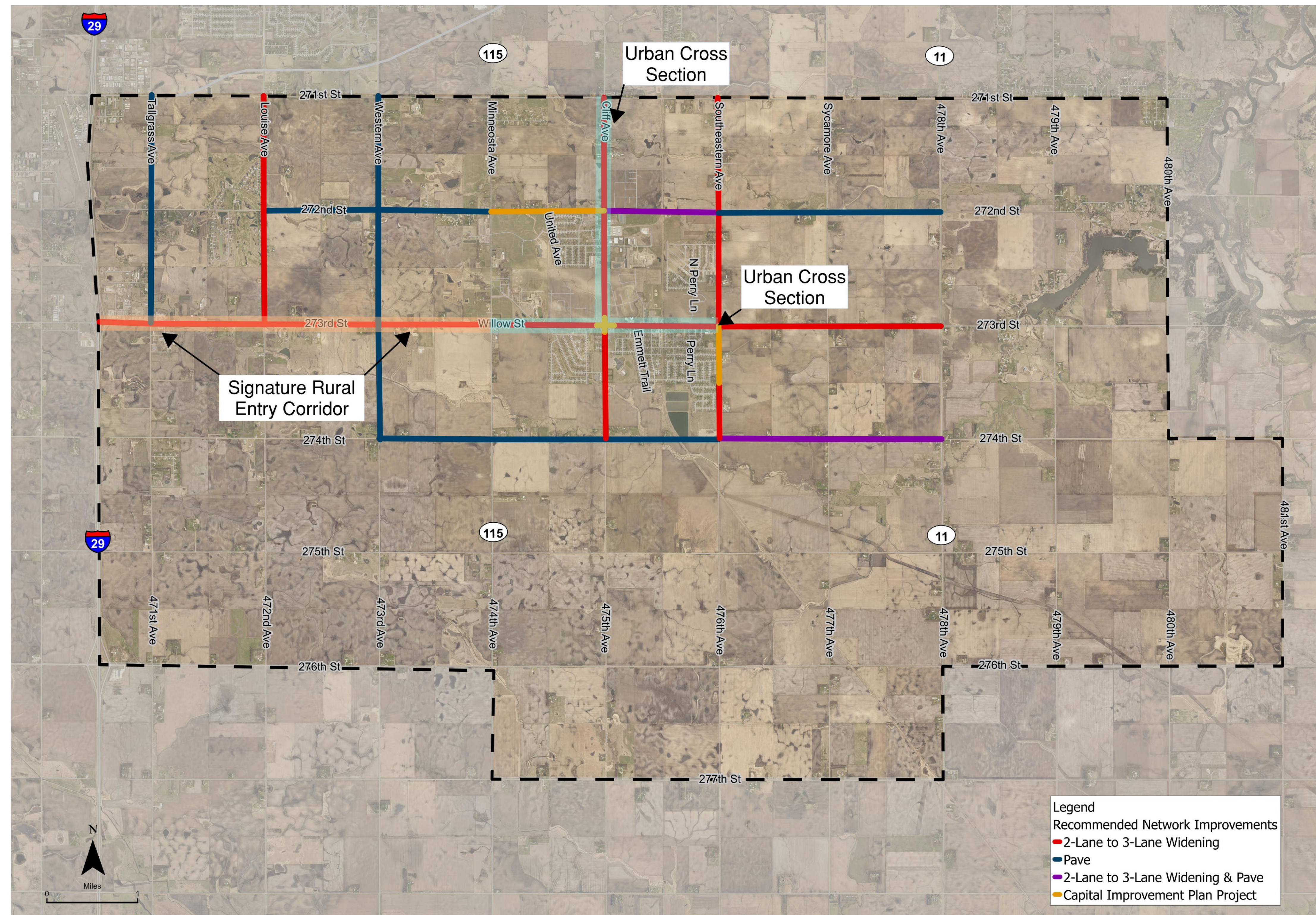




# HARRISBURG MASTER TRANSPORTATION PLAN



## DRAFT FUTURE STREET IMPROVEMENTS

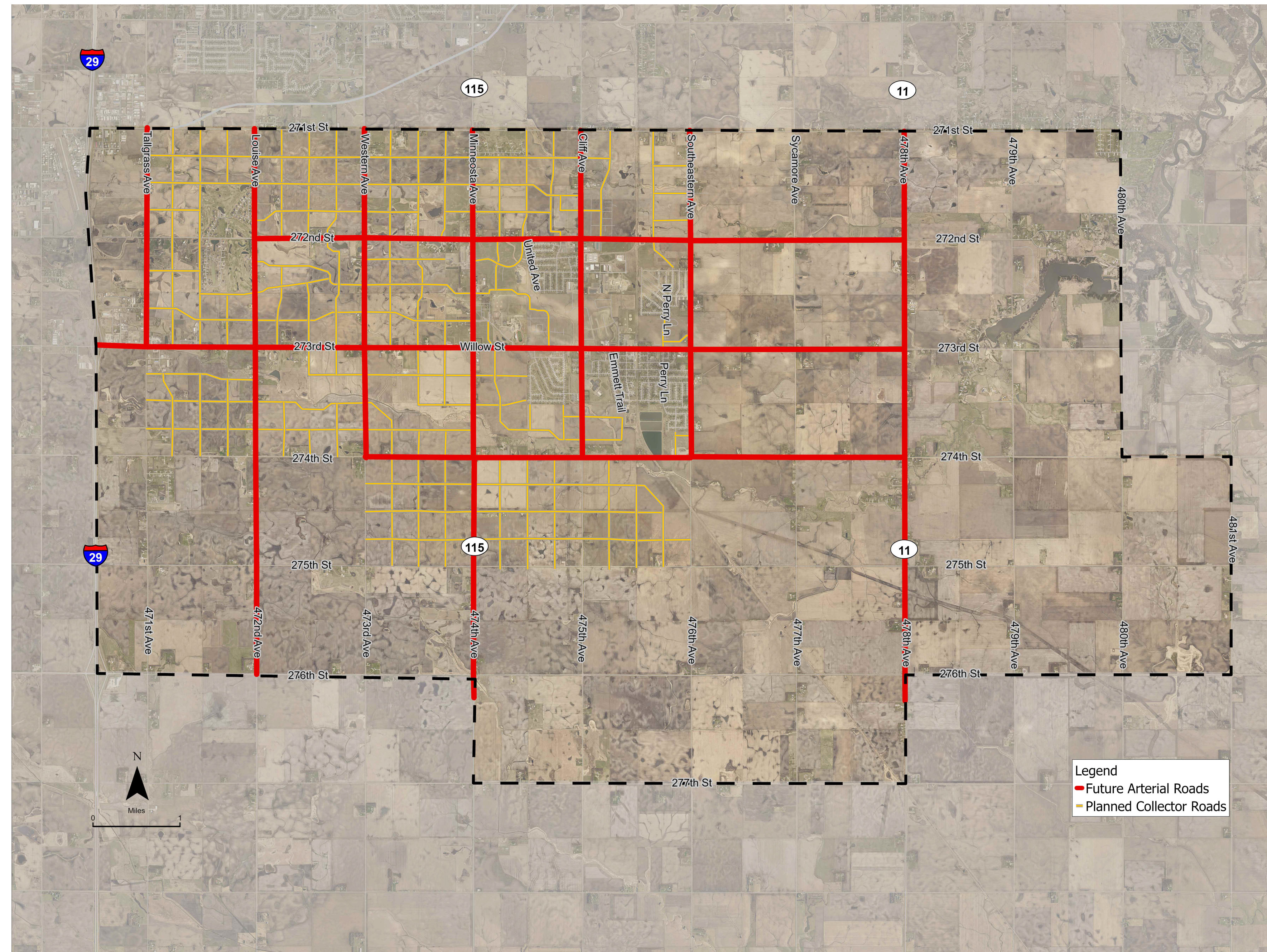




# HARRISBURG MASTER TRANSPORTATION PLAN



## DRAFT FUTURE ARTERIAL AND COLLECTOR STREET NETWORK









# HARRISBURG MASTER TRANSPORTATION PLAN



## POTENTIAL PEDESTRIAN CROSSING TREATMENTS

### ► Mid-Block Crossings

- Found at locations with high pedestrian activity
  - Near specific destinations, i.e. park, school, museum
- Common elements include:
  - Crosswalk markings
  - Signage
  - Pedestrian signals
  - Curb extensions



### ► Rectangular Rapid Flashing Beacons (RRFB)

- Pedestrian activated device for enhancing crossing visibility
  - Triggers flashing LED lights to indicate pedestrian is crossing
  - Recommended for mid-block and uncontrolled crossings
- Common elements include:
  - Crosswalk markings
  - Signal
  - Signage



### ► High Visibility Crosswalks

- Use patterns to alert motorists of pedestrian crossing
- Recommended for mid-block and uncontrolled crossings
- Common elements include:
  - Crosswalk markings
  - Signage signage



### ► High-Intensity Activated Crosswalks (HAWK)

- Pedestrian-activated signal
- Installed at mid-block crossings, minor intersections
  - Locations inappropriate for a conventional traffic signal
- Common elements include:
  - Crosswalk markings
  - Signal
  - Signage
  - Audible signal for hearing impaired users



### ► Pedestrian Crossing Warning Signs

- Signage used to alert motorists of pedestrian activity
- Located at crossing locations
  - Installed in advance of mid-block crossings



### ► Concrete Median Islands with Refuge

- Crossing area for pedestrians on high volume roads
- Suitable for mid-block crossings, roads with 4 or more lanes
  - Also suitable for 2-, 3-lane roads with high traffic volumes
- Common elements include:
  - Crosswalk markings
  - Median
  - Pedestrian signals
  - Signage



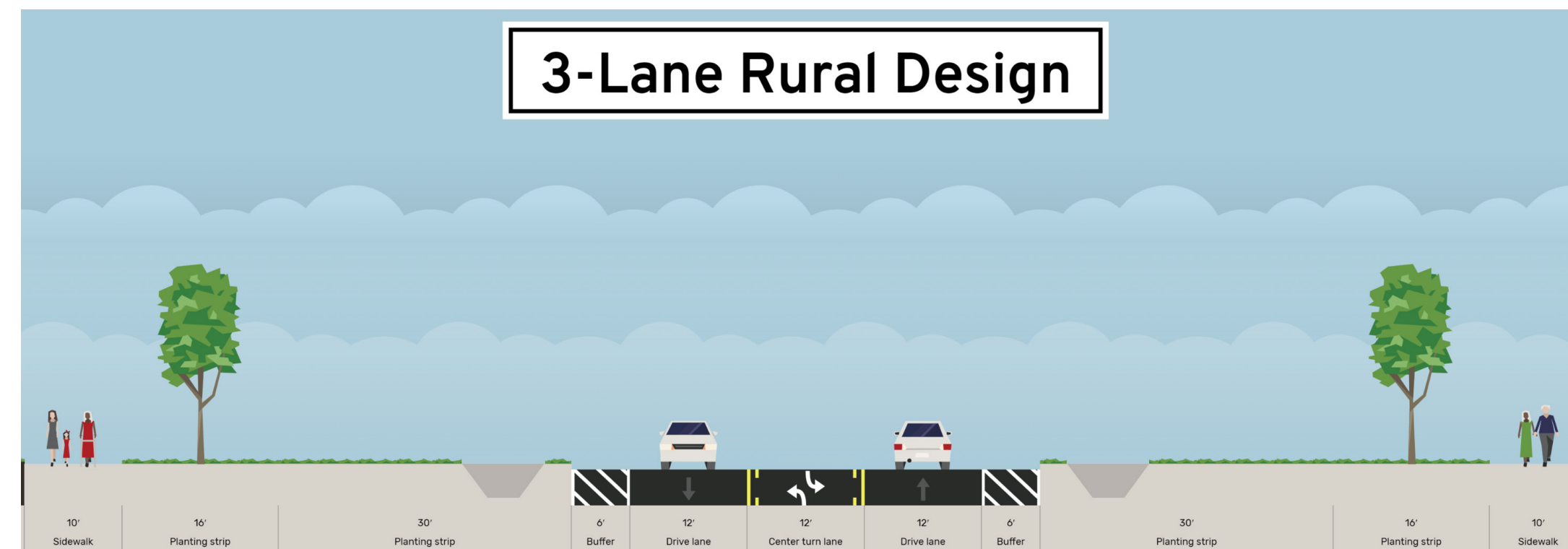


# HARRISBURG MASTER TRANSPORTATION PLAN



## POTENTIAL STREET CROSS SECTIONS

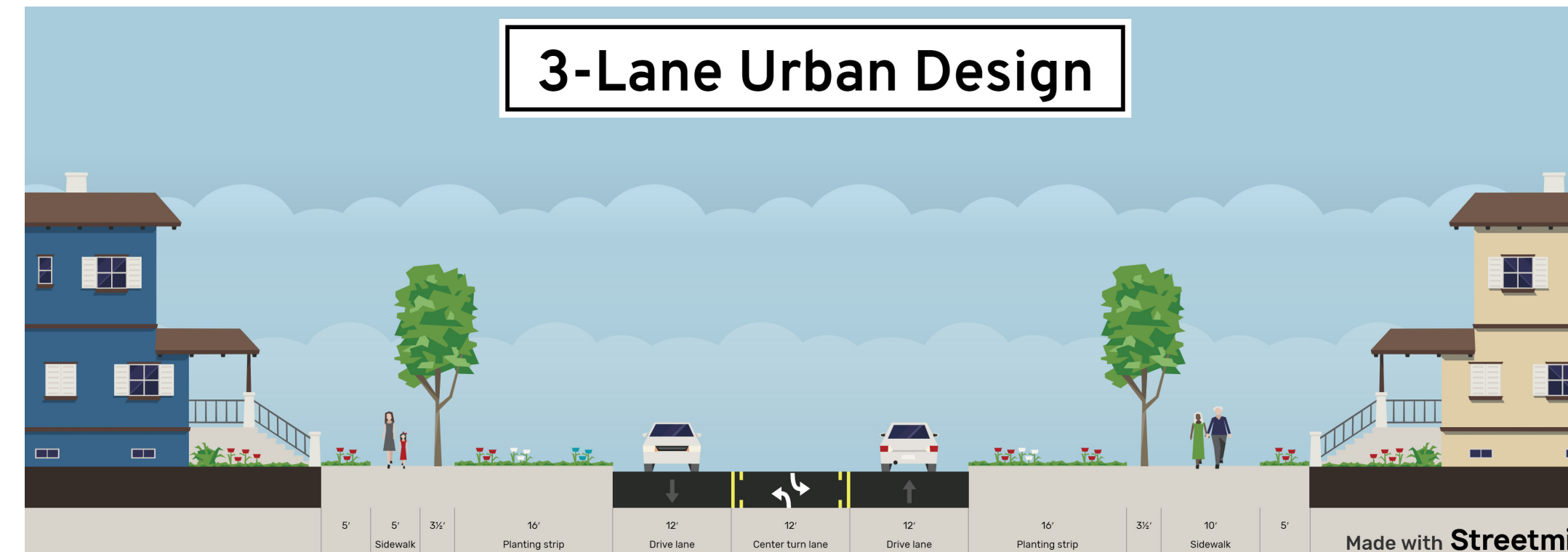
### 3-Lane Rural Design



#### 3-LANE CROSS SECTION RURAL EXAMPLE

- Example Right-of-Way: 160'
- Expandable to 5-lanes
- 40'+ greenspace separation between pedestrian way and roadway

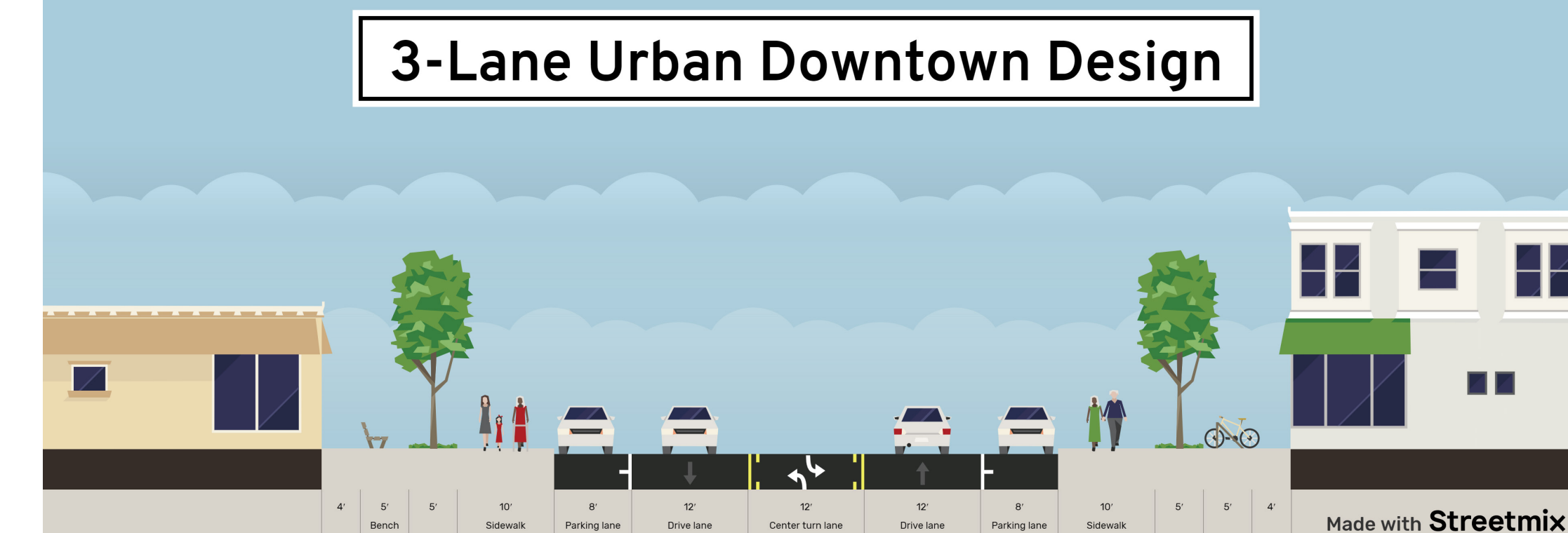
### 3-Lane Urban Design



#### 3-LANE CROSS SECTION URBAN EXAMPLE

- Example Right-of-Way: 100'
- Expandable to 5-lanes
- Pedestrian space closer to street

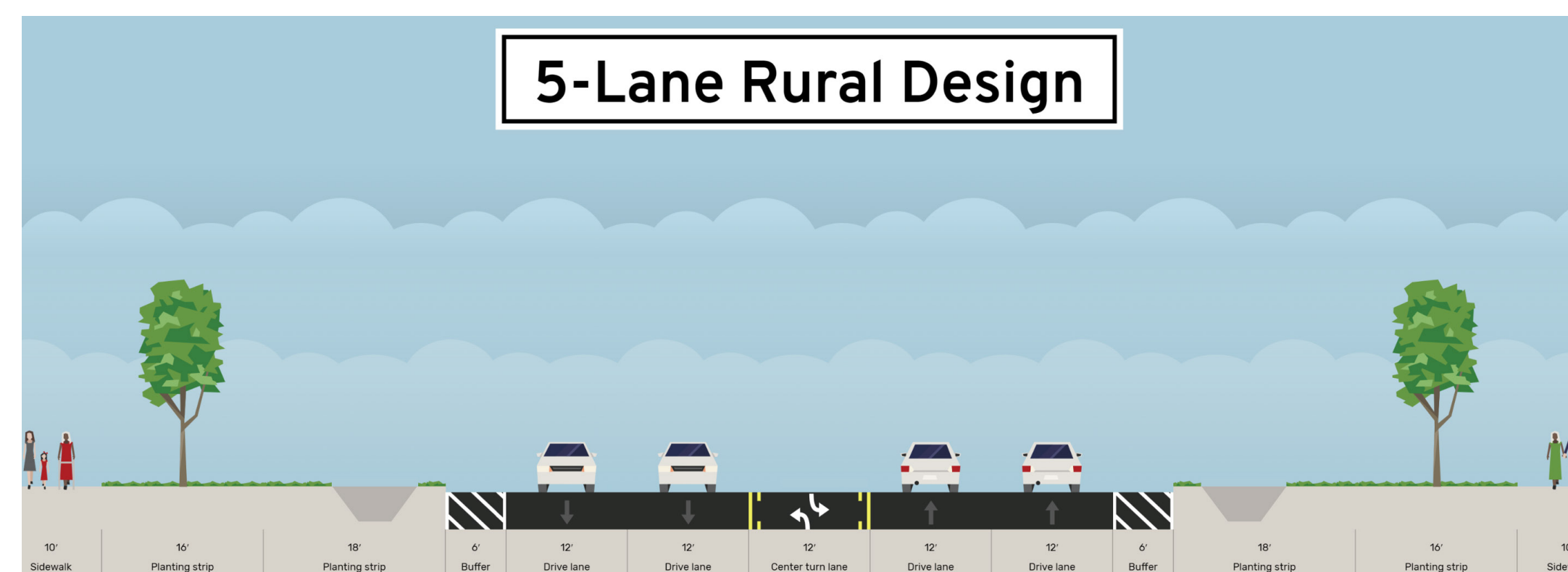
### 3-Lane Urban Downtown Design



#### 3-LANE CROSS SECTION DOWNTOWN EXAMPLE

- Example Right-of-Way: 100'
- Provides for on-street parking (or bike lanes if desired)
- Pedestrian space closer to street
- Easy access from street to adjacent land development

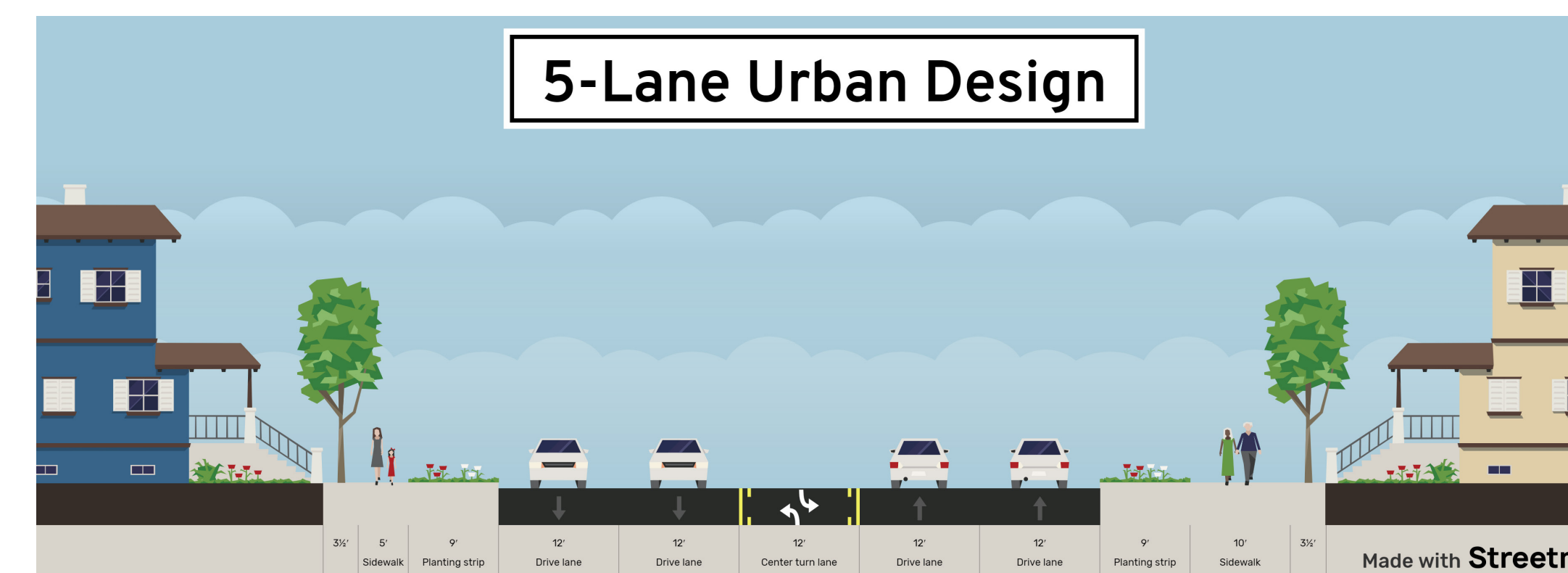
### 5-Lane Rural Design



#### 5-LANE CROSS SECTION RURAL EXAMPLE

- Example Right-of-Way: 160'
- 30' greenspace separation between pedestrian way and roadway
- Sidepath or sidewalk elements will vary by location

### 5-Lane Urban Design



#### 5-LANE CROSS SECTION URBAN EXAMPLE

- Example Right-of-Way: 100'
- Pedestrian space closer to street