

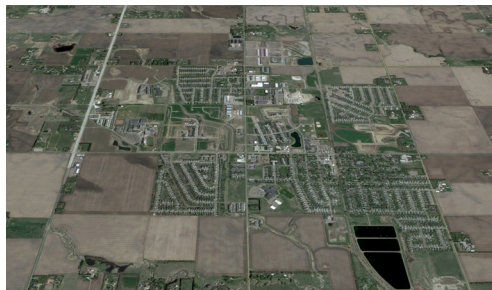
The Road to a New Plan

Harrisburg Master Transportation Plan



PAST

The small farming community of Harrisburg grew slowly until the 1970's when the first of several small residential subdivisions were approved and the change to a bedroom community began. This modest rate of growth, of a dozen or so homes and maybe one new street per year, continued for nearly 30 years. Then the housing boom of the 2000's occurred, with the City's pop. soaring from less than 1,000 to more than 4,000 residents in less than ten years.



PRESENT

With a current estimated population of just over 7,000, Harrisburg is a thriving community. With its proximity to the Sioux Falls metropolitan area, traffic levels and patterns are anticipated to change over time as the City continues to grow. As such, the South Dakota Department of Transportation and the City of Harrisburg have recognized a need to establish baseline conditions and plan for future transportation improvements for the area.



FUTURE

As Harrisburg continues to develop into the future, it is important to plan for an effective transportation system that can provide safe mobility into the future. Significant travel growth is anticipated between today and 2045, spurring the need for a deeper look into the plan for new roadways, pedestrian and bike facilities, and more!



Take the Harrisburg MTP Survey!

The survey closes on Decemebr 18, 2021.

Visit the Project Website: harrisburgMTP.com

TIMELINE:

November 2021

Public Meeting #1

Spring 2022

Public Meeting #2 & Draft Plan Complete

Summer 2022

Final Plan Complete

PROJECT CONTACTS:

Andrew Pietrus

City of Harrisburg

Andrew.Pietrus@harrisburgsd.gov

Jason Carbee

HDR Engineering

Jason.Carbee@hdrinc.com

